

7.2.D1 ~ Congruent Triangles

© 2015 Kuta Software LLC. All rights reserved.

Complete each congruence statement by naming the corresponding angle or side.

1)  $\triangle RQP \cong \triangle RYZ$

$\overline{RQ} \cong ?$

3)  $\triangle FGH \cong \triangle FGA$

$\overline{HF} \cong ?$

5)  $\triangle RSQ \cong \triangle RTV$

$\angle QRS \cong ?$

7)  $\triangle XVW \cong \triangle XVI$

$\angle WXV \cong ?$

9)  $\triangle KJI \cong \triangle KED$

$\angle IKJ \cong ?$

2)  $\triangle CBA \cong \triangle IAK$

$\angle B \cong ?$

4)  $\triangle UTS \cong \triangle UJL$

$\overline{TS} \cong ?$

6)  $\triangle UST \cong \triangle SUX$

$\overline{TU} \cong ?$

8)  $\triangle LMK \cong \triangle MLE$

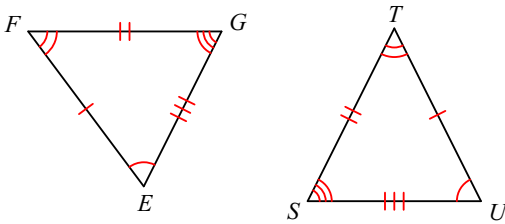
$\angle KLM \cong ?$

10)  $\triangle DBC \cong \triangle YXZ$

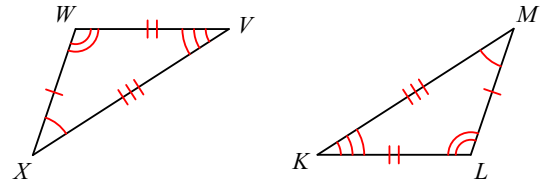
$\angle B \cong ?$

Write a triangle congruence statement for the triangles.

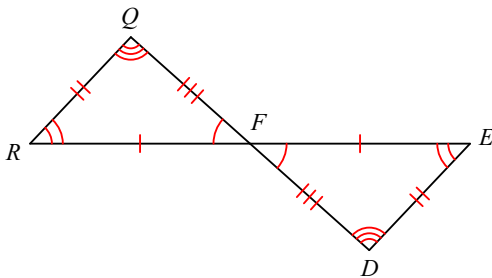
11)



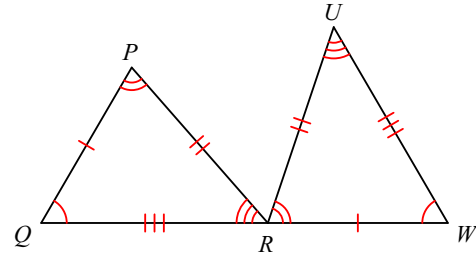
12)



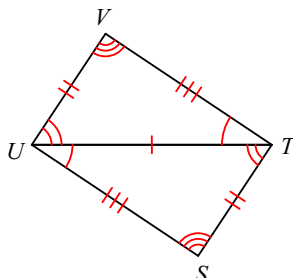
13)



14)



15)



16)

