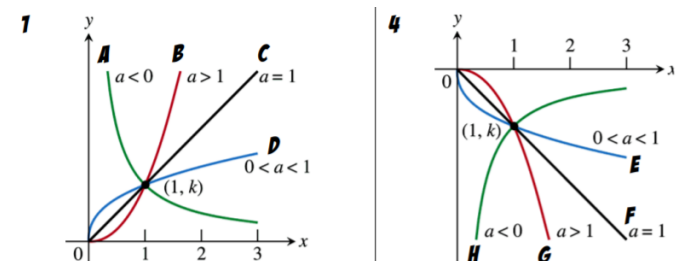


Name: \_\_\_\_\_

### Practice with Power Function Graphs

Match the power function to its curve and describe its end behavior.

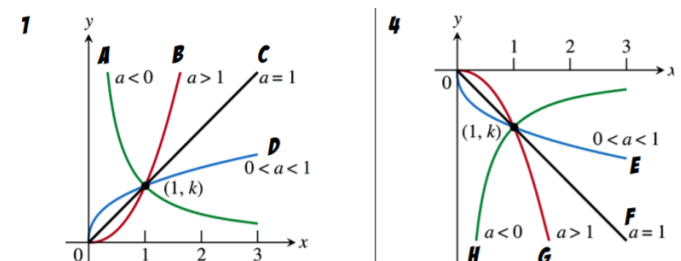


	Curve	$\lim_{x \rightarrow -\infty} f(x)$	$\lim_{x \rightarrow \infty} f(x)$
1.	$f(x) = -\frac{2}{3}x^4$		
2.	$f(x) = \frac{1}{2}x^{-5}$		
3.	$f(x) = 2x^{1/4}$		
4.	$f(x) = -x^{1/3}$		
5.	$f(x) = -2x^{-2}$		
6.	$f(x) = 1.7x^{-2/3}$		
7.	$f(x) = -\frac{1}{20}x^1$		
8.	$f(x) = 100x^{80}$		
9.	$f(x) = 5x^{1/21}$		
10.	$f(x) = 4x^{-123}$		

Name: \_\_\_\_\_

### Practice with Power Function Graphs

Match the power function to its curve and describe its end behavior.



	Curve	$\lim_{x \rightarrow -\infty} f(x)$	$\lim_{x \rightarrow \infty} f(x)$
1.	$f(x) = -\frac{2}{3}x^4$		
2.	$f(x) = \frac{1}{2}x^{-5}$		
3.	$f(x) = 2x^{1/4}$		
4.	$f(x) = -x^{1/3}$		
5.	$f(x) = -2x^{-2}$		
6.	$f(x) = 1.7x^{-2/3}$		
7.	$f(x) = -\frac{1}{20}x^1$		
8.	$f(x) = 100x^{80}$		
9.	$f(x) = 5x^{1/21}$		
10.	$f(x) = 4x^{-123}$		